




*Our Hard work, Motivation and skill  
blend With Creativity to Style the world  
with finest Garments*



# Contents



1	Viewpoint
2	Mission & Vision
3	Company at a Glance
4	Journey for Excellence
5	Products
6	Capacity
7	Technology & Design
8	Quality Control & Assurance
9	Work Place Environment
10	Worker's Safety



ACCORD  
on The Road To Strong Safety in Bangladesh



Walmart  
Save money. Live better.







## VIEWPOINT

### Since 2008 We are in Apparels Manufacturing...

**RDM GROUP** is a Alliance approved factory and the Accord remediation work is ongoing. Its manufacturing Knit & woven garments. The company has invested a lot to set up the state of the art Machineries to meet the challenges of fashion World With The help of true leadership of the Management, it has a group of skilled, dedicated and hard working employees. At present factory have 50 lines and are producing 2 million pcs of men's and ladies Apparels per month.

### Philosophy

RDM Group was established In 2008 with a policy of honest, open and ethical business. Sustaining long term business is the motto, rather than short term gains. The company strives to do business with customers who share a similar philosophy. We believe that the ultimate objective of the company is to make sure the products are acceptable to the ultimate individual consumer. This objective can only be attained through working with the customer's complete trust, understanding and mutual cooperation. The philosophy has indeed paid handsomely in terms of go.



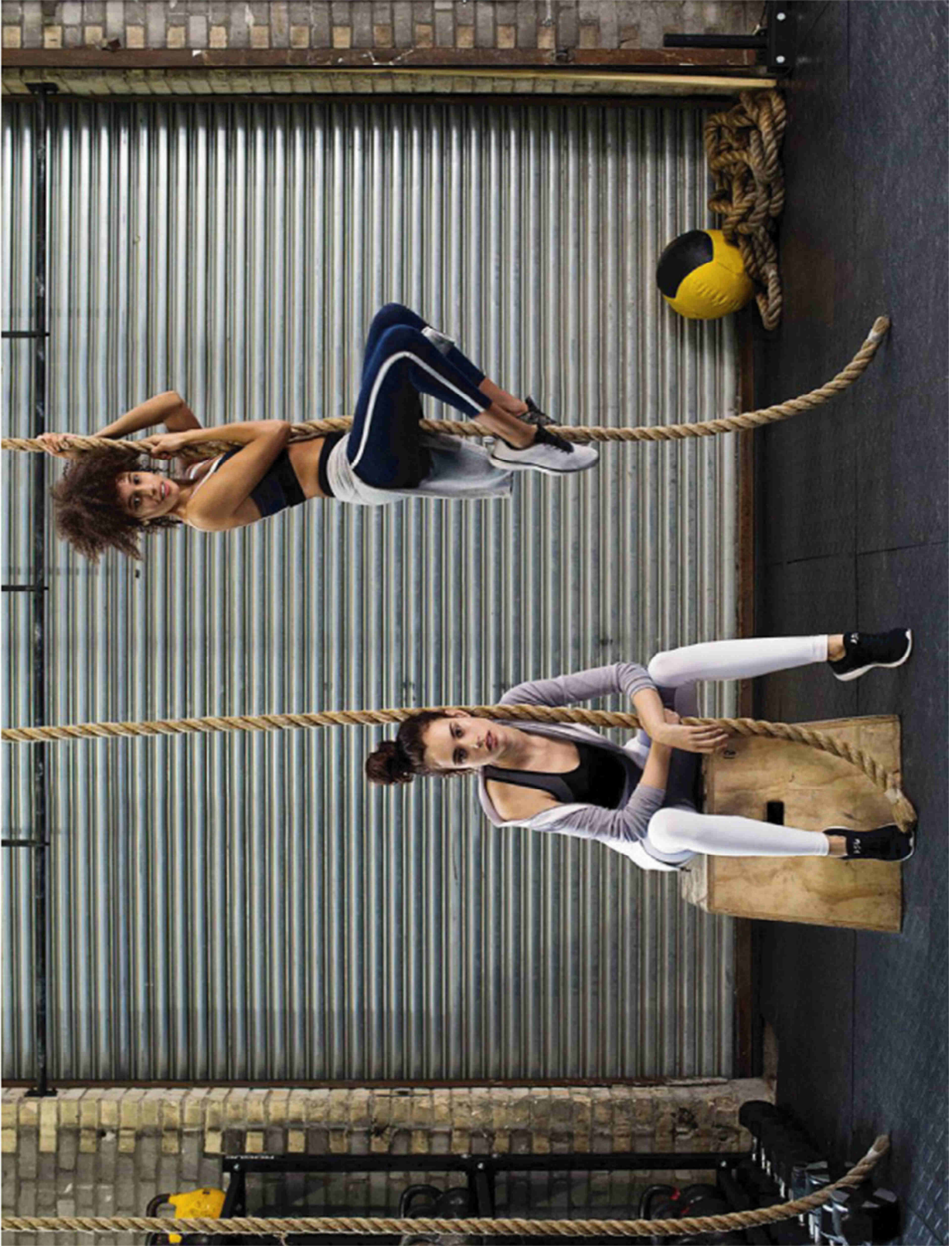
**ACCORD**  
on Fire and Building Safety in Bangladesh



**Walmart**  
Save money. Live better.

01



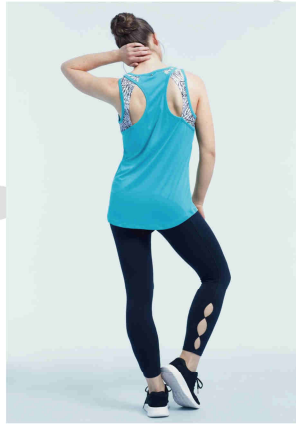




## MISSION & VISION

### Our Mission

Become a globally recognized Apparel manufacturer by ensuring personalized service for each customer and creating continuous employment opportunities for the betterment of the country.

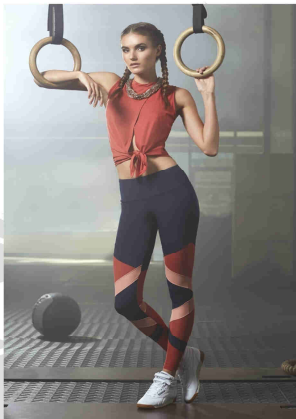


### Our Vision

The Company mission is to maximization of productivity and quality of products to ensure competitive price with maintaining all ethical, health & safety responsibilities.

### Our Focus

We Focus on production of top quality garments in a fully compliant environment with proper accountability.



### Our Objectives

To confirm and overcome the customer expectation, Improve productivity and quality, Develop worker rights with their concern elected representative to meet the future challenges and continual improvement.

### Our Beliefs

We believe that our customer's satisfaction is our main centre of all activities.







## Company at a Glance

COMPANY NAME	RDM Apparels Ltd	Unibra Wear Ltd	Uni Garments Ltd
Type of Business	100% Export oriented Garments Factory		
Legal Status	Private Limited Company		
Year of Est	2008	1995	1984-1985
Contact Person	Engr. Mostafa Sarwar Riyadh Managing Director Cell: +88 01678-062341 Tel : +880 312854236 Email: rdm.apparels@gmail.com	Rakibul Alam Chowdhury Chairman Cell: +88 01711-750512 Tel : +880 312854236 Email: rdm.apparels@gmail.com	
Corporate Office	Anas Tower (4th Floor ), 3068/A Shah Amanat Bridge Connecting Road, Rahattarpole, Bakalia, Chittagong-4000, Bangladesh.		
Factory Address	1614/A, Rajakhali Road, Chaktai, Chittagong-4000, Bangladesh.	C&B Plot# 80, Nasirabad Industrial Area, Baizid Bostami Road, Chittagong-4209, Bangladesh.	
Incorporation No	CH-6110	1869	C-13394971
Credit Limit	200 Million Taka	200 Million Taka	
Main Buyer	Wal-Mart, AAI, M Haidary, J Corp, Marks Work Wear House, Sams Club.		
Main Brand	Eddie Bauer, Marika, Bally, Balance Collection, Zobha, Hollywood, Russell, Big 5, Spalding, Tech-One, Fruit of the Loom, Denver Hayes, DHU 35, Dakota, Wind River,		
Production Space	52,000 Sft	1,03,611 Sft	
Total Menpower	1200 Nos	2,000 Nos	
Prod. Capacity	7 Million Garments (Yearly)	12 Million Garments (Yearly)	
Turn Over	\$ 25 Million (Yearly)	\$ 40 Million (Yearly)	



**ACCORD**  
on Fire and Building Safety in Bangladesh



**Walmart**  
Save money. Live better.





## JOURNEY FOR EXCELLENCE

**RDM Apparels Ltd** was established in the year of 2008 in Chaktai commercial area, Chittagong Bangladesh. We started with only 80 machines and 150 work forces. Initially we have rented only 1 floor (13000 sft) and started our operation as a 100% export oriented readymade garments factory. The factory location is prominent for commercial business but there was no RMG factory in that area. So from the starting it was very much challenging with lack of skill manpower and also to create working environment in surrounding area. But we took the challenge and created our motivated and skill work force to run the factory over the years.

Right now we covered 4 floors (52000 sft), The work force is 1200 with 521 automated modern sewing machines in RDM. Our factory is equipped with centralize Compressor, CAD system, Laser cutter and also we are consistently adding updated and modern machines regularly with our efficient production system.

The merchandise team is now about 40 those who are almost textile background from various reputed university and many expertise senior professionals were joined from few prominent companies. The whole supply chain along with HRIS, Order Management, Planning, Procurement, Inventory, production, Commercial, Finance & Accounting management are ran and monitored by using award winning ERP system software with the impact "state of the art". Now we are exporting 7 million garments every year to various well known and reputed retailer around the globe, which include Wal mart, (USA, Canada, Mexico); Sams Club USA, Marks Work wear house, AAI, M Haidary, J. Corp etc.

On 3rd December 2017 we have successfully achieved 100% completion certificate from Alliance and also currently RDM Apparels LTD is certified with Wal-Mart Green approval for ethical standard.

In the month of Sep 2018 RDM Apparels Ltd has decided to extend the company's business as large scale into become a RMG Group through take over one of Leading 1st generation running RMG Company in Bangladesh named "**Uni Group**" C&B Plot # 80, Nasirabad Industrial Area, Baizid Bostami Road, Chittagong, Bangladesh by using investment & versatile experience, Skill Management and business reputation. The vision is to manufacture world renowned product, The company was established on 1984 as Uni Garments ltd and in the 1995 increased the facility as Uni bra wear ltd. The factory total land area is 134 decimal, 4 stored building and the total production area is about 1,00,000 sft with compliance approval from Alliance & Wrap. Its workforce and management has long experience with pride. Highly skill worker with around 40 year's experience management accomplish the cut to pack process with best possible supply chain system. As per companies top management decision the factory will be rearranged the whole environment as best possible way to become a leading RMG Group in Bangladesh.



**ACCORD**  
on Fire and Building Safety in Bangladesh



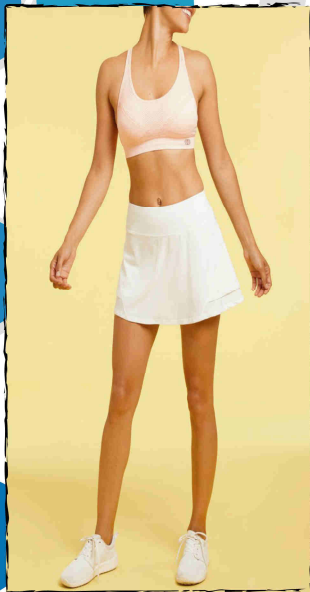
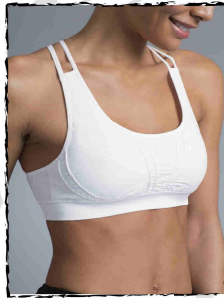
**Walmart**  
Save money. Live better.

04





PRODUCTS



ACCORD  
on Fire and Building Safety in Bangladesh





## CAPACITY

### RDM Apparels Ltd

NAME OF MACHINE	QUANTITY
Single Needle Machine	129 Sets
4 Thread Overlock Machine	85 Sets
6 Thread Interlock Machine	45 Sets
Flat Lock Machine	85 Sets
Rib Cutting Machine	03 Sets
Re-winder Machine	01 Sets
One Step Zig Zag	05 Sets
Cutting Machine	06 Sets
Computer Bartack Machine	12 Sets
Kansai Machine	08 Sets
Two Needle Machine	12 Sets
End Cutter Machine	06 Sets
Button Hole Machine	08 Sets
Button Attach Machine	05 Sets
Button Pull Test Machine	01 Set
Thread Sucking Machine	02 Sets
Fabric Inspection Machine	01 Set
Cad Machine	02 Sets
Smoking Machine	01 Set
Heat Seal Machine (Manual)	20 Sets
Heat Seal Machine (Auto)	10 Sets
Fusing Machine	01 Set
Vacuum Iron	14 Sets
Spot Removing Machine	03 Sets
Flat Seamer Machine	20 Sets
Leaser Cutter Machine	02 Sets
Band Knife Cutting Machine	01 Set
Joker Tag Machine	02 Sets
Snap Button Machine	02 Sets
Digitizer	01 Set
Pattern Cutter	01 Set
Cad Printer (Two Head)	01 Set
Moisture Reduce Machine	02 Sets
Cad Printer (Four Head)	01 Set
Electric Boiler	04 Sets
Boiler Steam Iron	18 Sets
<b>Total</b>	<b>521 Sets</b>

NAME OF OTHER MACHINE	QUANTITY
Fire Hydrant System	02 Sets
Electrical Sub-Station	02 Sets
Central Fire Alarm System	02 Sets
Generator (400,350,275 & 65 KVA)	04 Sets
Electric Transformer(11000 Volt)	02 Sets

### Uni Garments Ltd

NAME OF MACHINE	QUANTITY
Cutting Machine	05 Sets
Over Lock	97 Sets
Single Needle Machine	115 Sets
Flat Lock Machine	89 Sets
Button Attach	03 Sets
Two Needle Machine	17 Sets
Bartack Machine	27 Sets
Zigzag Machine	44 Sets
Top Chainter	01 Sets
Picot Machine	01 Sets
Feed of The arm	01 Sets
RIB Opener Machine	01 Sets
Heat Sealing Machine	15 Sets
Layer Cutter Machine	02 Sets
Fabric Inspection Machine	01 Set
Band Knife Machine	01 Set
Knife sharpening Machine	01 Set
Needle Detector Machine	01 Sets
<b>Total</b>	<b>422 Pcs</b>

### Unibra Wear Ltd

NAME OF MACHINE	QUANTITY
Cutting Machine	04 Sets
Over Lock	253 Sets
Single Needle Machine	72 Sets
Flat Lock Machine	216 Sets
Bartack Machine	26 Sets
Pad Printing Machine	12 Sets
Sealing Machine	05 Sets
Heat Transfer	13 Sets
Cutting N. Cutter	03 Sets
<b>Total</b>	<b>604 Pcs</b>

NAME OF OTHER MACHINE	QUANTITY
Boiler (Gas)	01 Set
Needle Detector Machine	01 Set
Air Compressor	05 Sets
Generator	02 Sets
<b>Total</b>	<b>21 Pcs</b>



**ACCORD**  
or Fire and Building Safety in Bangladesh



**Walmart**  
Save money. Live better.









The factory is fully controlled by state of the art system technology based ERP (Enterprise Resource Planning) i.e HRIS, Planning & IE, Order Management, Procurement, Inventory, Production, Commercial, Finance & Accounting centrally. The system covered all the department to ease accountability and speed the information to all concern.

## TECHNOLOGY



## DESIGN

RDM Group can comprehend the swinging pendulum of the fashion world and can therefore adapt to the taste of trendy consumers. It has restructured its sample division next to head office for the easy coordination with merchant team. This helps the design & development team and results in better client management.



ACCORD  
on Fire and Building Safety in Bangladesh



Walmart  
Save money. Live better.

07







## QUALITY CONTROL & ASSURANCE

Throughout its decade-long operation, RDM Group has perfected its Quality Control System, which includes scrupulous checks, to ensure flawless production. The experienced Central Quality-Assurance (QA) team extends its operation even into the procurement of raw-materials and machinery. RDM Group has continuously restructured this system, and it now features a unique capability in terms of industry-low rework and repair rate. It has acquired the latest Quality-Control equipment, and developed quality-consciousness among the workforce. Due to its firm grip on quality regulations, RDM Group can meet the best AQL requirements of clients. RDM Group QA team provides no room for error and can readily assure superior product-quality to its clients. At RDM Group, client satisfaction is company-satisfaction.







## WORK PLACE & ENVIRONMENT

As a responsible apparel producer, RDM Group provides employees a work environment high above the law-required level. The company installed and has updated the safety system as per Alliance & Accord requirements and so on. The goal is to exceed requirements of local legislation and reach the global standards, and thereby support clients' images and sourcing principles. Clearly demarcated emergency routes & exits, smoke & fire detectors, consciously designed working lay-outs ensure a safe workplace for workers. As per compliance requirements, instructions and warning signs are posted in highly visible places, inside the factory and in local language (Bangla). Moreover, usage of metal gloves in times of fabric cutting, needle guard in time of sewing and such similar procedures reduces significantly work-related accidents in **RDM Group**. Besides being safe, **RDM Group** workplace offers a congenial & supporting environment for all: managerial staffs and workers work in mutual cooperation and respect. **RDM Group** consciously puts effort to empower woman not only by just recruiting more women in workforce, rather by undertaking some assertive programs to train & promote women in the higher levels..



**ACCORD**  
on Fire and Building Safety in Bangladesh



**Walmart**  
Save money. Live better.







## WORKER'S SAFETY

**RDM Group** strictly adheres to ethical business-practice. It carries out compliance as a continuous process, and exceeds local legislations to meet ILO convention in terms of employment practice and safety. Its Compliance Management Team monitors and reviews the various activities performed throughout the organization. For the safety of its workers, **RDM Group** has improved workplace conditions, set up noticeable warning signs in the local language; enforced the usage of safety equipment; and built awareness among the workforce. The work-place has clearly demarcated emergency exits and equipment. **RDM Group** strongly opposes Abuse & Harassment, Force-labor, Child-labor, Racism, Discrimination and Exploitation of workers, and makes every possible effort to discourage such misconducts. It employs individuals solely on the basis of their qualifications.



**ACCORD**  
on Peace and Working Safety in Bangladesh



**amfori**  
BSCI

**Walmart**  
Save money. Live better.

10











**Head Office**

Anas Tower (4th Floor ), 3068/A Shah Amanat Bridge Connecting Road,  
Rahattarpole, Bakalia, Chittagong-4000