



*Our Hard work, Motivation And skill  
blend With Creativity to Style the world  
with finest Garments...*

# COMPANY PROFILE



01 Viewpoint

02 Board of Director's

03 Mission & Vision

04 Company at a Glance

05 Journey to Excellence

06 Products

# CONTENTS

Capacity

07

Design & Technology

08

Quality Control & Assurance

09

WorkPlace Environment

10

Worker's Safety

11





Since 2008  
we are in Apparels manufacturing...

**RDM GROUP** is an Alliance approved factory, It is in manufacturing of knit and woven garments. The company has invested a lot in setting up state of the art machinery to meet the challenges of the fashion world. With the help of the true leadership of the management, it has a group of skilled, dedicated, and hardworking employees. Currently, the factory has 50 production lines and produces 2 million pieces of men's and ladies' apparel per month.

#### Philosophy

**RDM Group** was established in 2008 with a policy of honest, open, and ethical business practices. Sustaining long term business is the motto, rather than short term gains. The company strives to do business with customers who share a similar philosophy. We believe that the ultimate objective of the company is to ensure that the products are acceptable to the end consumer. This objective can only be achieved through working with the customer's complete trust, understanding, and mutual cooperation. This philosophy has indeed paid handsomely in terms of growth.

## VIEW POINT:



## Managing Director's Message



**Mostafa Sarwar Riyadh**  
Managing Director

In the current process of widespread globalization, we in RDM understand that meeting our customer's requirement is essential to the success of our organization. We can say that the years we experienced in the past are significant years and it is clearly seen that we have intensively delivered our best performance to focus on customer satisfaction.

On behalf of the Board of Directors, I would like to thank our valuable customers and world-class suppliers. Besides, I would like to make a special mention of our staffs' and workers' enthusiastic contribution in establishing our organization. The one thing I would like to present is that our leadership is a result of our employees. They have clearly made RDM one of the outstanding organizations. We know our highly trained technician and worker apply their specialized knowledge to reliably and efficiently produce high quality service.

We are now in an ever-changing market environment. In such situation, we firmly believe that "trust" is the key element in persuading customers to choose our service and quality products. We totally accept that "trust" can create a "Win-Win Situation" for a long deeper relationship We will continue our endless effort to serve our valuable customers.

In addition, we in RDM will intensively endeavor in environmental awareness for the purpose of preventing from climate changes and resources depletion. We are committed to preservation of the environment we live in. So in summary, I would like to thank again all those who have contributed relentless hard work and effort of the past to bring up here today and will continue to grow for years to come.



**Mostafa Kamal Manik**  
Director



**Rakibul Alam Chowdhury**  
Chairman



**Mostafa Monowar Rahat**  
Director



## VISION & MISSION

### Our Mission

Become a globally recognized Apparel manufacturer by ensuring personalized services for each customer and creating continuous employment opportunities for the betterment of the country.

### Our Vision

The company's mission is to maximize productivity and the quality of products to ensure competitive pricing while maintaining all ethical, health, and safety responsibilities.

### Our Focus

We focus on production of top quality garments in a fully compliant environment with proper accountability.

### Our Beliefs

We believe that our customers' satisfaction is the main focus of all our activities.

### Our Objectives

To meet and exceed customer expectations, improve productivity and quality, develop worker rights with their elected representatives, and address future challenges through continuous improvement.





# COMPANY AT A GLANCE

COMPANY NAME	RDM APPARELS LTD	UNI GARMENTS LIMITED	UNIBRA WEAR LTD
Type of Business	100% Export oriented Garments Factory		
Legal Status	Private Limited Company		
Year of Est:	2008	1984-1985	1995
Contact Person	Mostafa Sarwar Riyadh <b>Managing Director</b> Cell: +880 1678062341 Email: msriyadh@rdmapparels.com	Rakibul Alam Chowdhury <b>Chairman</b> Cell: +880 1711750512 Email: rakibul.alam@rdmapparels.com	
Corporate Office	3068/A (4th Floor) M.R Khan Tower-2, Shah Amanat Connecting Road, Rahattarpool, Bakalia, Chattogram-4000, Bangladesh.		
Factory address	1614/A Rajakhali road, Chaktai, Chattogram4000, Bangladesh.	80 Nasirabad Industrial Area, P.O Bayazid Bostami, Chattogram4210. Bangladesh.	
Incorporation No	CH-6110	C-13394971	1869
Production Space	52,000 Sft	1,03,611 Sft	
Total Manpower	1200 Nos	2,000 Nos	
Prod. Capacity	7 Million Garments (Yearly)	12 Million Garments (Yearly)	
Turn Over	\$ 25 Million (Yearly)	\$40 Million (Yearly)	
Credit Limit:	200 Million Taka	200 Million Taka	
Main Buyer:	GELMART INTERNATIONAL IFG CORPORATION NTD APPAREL INC. BABY FAIR INC. INTERSPORT INTERNATIONAL CORPORATION GmbH	KOUPEL FKS INDUSTRIES INC. FAM LLC MARICA LLC HENBURY LTD THE MORET GROUP RICHLU MANUFACTURING	





## JOURNEY TO EXCELLENCE

**RDM Apparels Ltd** was established in the year of 2008 in Chaktai commercial area, Chittagong Bangladesh. We started with only 80 machines and 150 work force. Initially we have rented only 1 floor (13000 SQF) and started our operation as a 100% export oriented readymade garments factory. The factory location is prominent for commercial business but there was no RMG factory in that area. So from the starting it was very much challenging with lack of skill manpower and also to create working environment in surrounding area. But we took the challenge and created our motivated and skill work force to run the factory over the years.

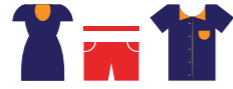
Right now we covered 4 floor (52000 SQF), the work force is 1100 with 500 automated modern sewing machines. Our factory is equipped with centralize Compressor, CAD system, Laser cutter and also we are consistently adding updated and modern machines regularly with our efficient production system.

The merchandise team is now about 30 with energetic fresh people has been recruited form CBIFT and many expertise senior professionals were joined from few prominent company. The whole supply chain along with inventory, procurement and production management are ran and monitored by using award winning ERP system software with the impact "state of the art". Now we are exporting 7 million garments every year to various well known and reputed retailer around the globe, which include Wal mart, (USA, Canada, Mexico); Sams Club USA, Mark Work warehouse, TJ MAX, Nord Storm etc.

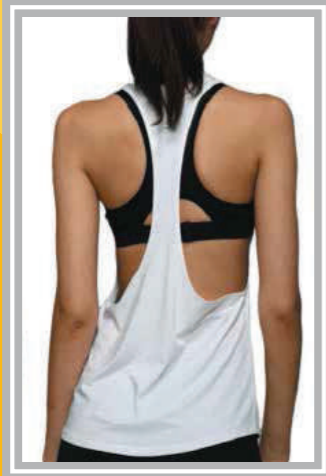
On 3rd December 2017 we have successfully achieved 100% completion certificate from Alliance and also currently RDM Apparels LTD is certified with WalMart Green approval for ethical standard Over the years we have taken all the challenge to meet the standard.

In the month of Sep 2018 RDM Apparels Ltd has decided to extend the company's business as large scale into become a RMG Group through take over one of Leading 1st generation running RMG Company in Bangladesh named "Uni Group" Plot # 80, Nasirabad Industrial Area, BaizidBostami Road, Chittagong, Bangladesh by using investment & versatile experience, Skill Management and business reputation. The vision is to manufacture world renowned product, the company was established on 1984 as Uni Garments Ltd and in the 1995 increased the facility as Uni bra wear Ltd. The factory total land area is 134 decimal, 4 stored building and the total production area is about 1,00,000sft with compliance approval from Alliance & Wrap. Its workforce and management has long experience with pride. Highly skill worker with around 40 years' experience management accomplish the cut to pack process with best possible supply chain system. As per companies top management decision the factory will be rearranged the whole environment as best possible way to become a leading RMG Group in Bangladesh.





PRODUCTS





## FACTORY MACHINE LIST

SL	MACHINE DESCRIPTION	UNI SET'S	RDM SET'S	TOTAL
1	CUTTING MACHINE	12	6	18
2	OVER LOCK MACHINE	193	130	323
3	SINGLE NEEDLE MACHINE	305	129	434
4	FLAT LOCK MACHINE	219	89	308
5	BUTTON ATTACH MACHINE	4	5	9
6	TWO NEEDLE MACHINE	27	12	39
7	BARTACK MACHINE	38	10	48
8	ZIGZAG MACHINE	44	2	46
9	PICOT MACHINE	1	0	1
10	FEED OF THE ARM MACHINE	1	0	1
11	RIB OPENER MACHINE	1	0	1
12	HEAT SEALING MACHINE	15	30	45
13	LAYER CUTTER MACHINE	4	6	10
14	FABRIC INSPECTION MACHINE	1	1	2
15	BAND KNIFE MACHINE	1	1	2
16	KNIFE SHARPENING MACHINE	1	0	1
17	NEEDLE DETECTOR MACHINE	1	1	2
18	PAD PRINTING MACHINE	7	0	7
19	SEALING MACHINE	5	0	5
20	HEAT TRANSFER MACHINE	13	0	13
21	CUTTING N CUTTER MACHINE	3	6	9
22	BOILER (GAS) MACHINE	1	1	2
23	AIR COMPRESSOR	5	2	7
24	GENERATOR	1	2	3
25	FLAT SEAMER (#607) MACHINE	71	26	97
26	BOTTOM HEMMING MACHINE	10	0	10
27	FW FLAT LOCK MACHINE	4	0	4
28	THREAD SUCKER MACHINE	2	2	4
29	VACUUM IRON TABLE	22	22	44
30	BUTTON HOLE MACHINE	4	8	12
31	KANSAI SPECIAL MACHINE	12	8	20
32	AUTO SPREADER MACHINE	3	1	4
33	MOULDING MACHINE	6	0	6
34	FABRIC RELAXING MACHINE	2	1	3
35	PLACKET SWEING MACHINE	2	0	2
36	SINGLE NEEDLE /NEEDLE FEED MACHINE	20	0	20
37	RIB CUTTING MACHINE	2	4	6
38	RECONE MACHINE	1	0	1
39	BUTTON PULL TEST MACHINE	0	1	1
40	SPOT LASER CUTTER MACHINE	0	2	2
41	STEAM IRON (02 SETS H.O)	0	18	18
42	CAD PRINTER (FOUR HEAD)	0	1	1
43	JOGGER TAG MACHINE	0	2	2
44	MOISTURE REDUCE MACHINE	0	2	2
45	DIGITIZER	0	1	1
46	PATTAN CUTTER	0	1	1
47	CAD PRINTER (TWO HEAD)	0	1	1
48	SPOT REMOVING MANCHINE	0	3	3
49	SMOKING MACHINE	0	1	1
50	CAD MACHINE	0	1	1
51	HOT AIR SEALING MACHINE	10	0	10
52	HYDROSTATIC TESTER	1	0	1
53	PNEUMATIC FLAT PRESS MACHINE	1	0	1
<b>TOTAL</b>		<b>1076</b>	<b>539</b>	<b>1615</b>

C  
A  
P  
A  
C  
I  
T  
Y



## TECHNOLOGY

The factory is fully controlled by state of the art system technology based ERP (Enterprise Resource Planning) i.e HRIS, Planner & IE, Order Management, Procurement, Inventory, Production, Commercial, Finance & Accounting centrally. The system covered all the department to ease accountability and spread the information to all concern.



## DESIGN

RDM Group can comprehend the swinging pendulum of the fashion world and can therefore adapt to the taste of trendy consumers. It has restructured its sample division next to head office for the easy coordination with merchant team. This helps the design & development team and results in better client management.





## QUALITY CONTROL & ASSURANCE

Throughout its decade-long operation, RDM Group has perfected its Quality Control System, which includes scrupulous checks, to ensure flawless production. The experienced Central Quality Assurance (QA) extends its operation even into the procurement of raw-materials and machinery. RDM Group has continuously restructured this system, and it now features a unique capability in terms of industry low rework and repair rate. It has acquired the latest Quality Control equipment, and developed quality consciousness among the workforce. Due to its firm grip on quality regulations, RDM Group can meet the best AQL requirements of clients. RDM Group QA team provides no room for error and can readily assure superior product quality to its clients. At RDM Group, client satisfaction is company satisfaction.





## WORK PLACE & ENVIRONMENT

As a responsible apparel producer, RDM Group provides employees a work environment high above the law required level. The company installed and has updated the safety system as per Alliance requirements and so on. The goal is to exceed requirements of local legislation and reach the global standards, and thereby support clients' images and sourcing principles. Clearly demarcated emergency routes & exits, smoke & fire detectors, consciously designed working layouts ensure a safe workplace for workers. As per compliance requirements, instructions and warning signs are posted in highly visible places, inside the factory and in local language (Bangla). Moreover, usage of metal gloves during of fabric cutting, needle guard in sewing machine and such similar procedures reduces significantly work related accidents in RDM Group. Besides being safe, RDM Group workplace offers a congenial & supporting environment for all: managerial staff and workers works in mutual cooperation and respect. RDM Group consciously puts effort to empower woman not only by just recruiting more women in workforce, rather by undertaking some assertive programs to train & promote women in the higher levels.



## WOKER'S SAFETY

**RDM Group** strictly adheres to ethical business practice. It carries out compliance as a continuous process, and exceeds local legislations to meet ILO convention in terms of employment practice and safety. Its Compliance Management Team monitors and reviews the various activities performed throughout the organization. For the safety of its workers, **RDM Group** has improved workplace conditions, set up noticeable warning signs in the local language; enforced the usage of safety equipment; and built awareness among the workforce.

The workplace has clearly demarcated emergency exits and equipment. **RDM Group** strongly opposes Abuse & Harassment, Force labor, Child labor, Racism, Discrimination and Exploitation of workers, and makes every possible effort to discourage such misconducts. It employs individuals solely on the basis of their qualifications.





**Corporate Office :**

M.R Khan Tower-2 (4th Floor) 3068/A  
Shah Amanat Bridge Connecting Road  
Rahattarpole, Bakalia, Chittagong-4000

**RDM APPARELS LTD**

1614/A, Rajakhali Road, Chaktai,  
Chittagong-4000, Bangladesh.

**UNI GARMENTS LIMITED**

80-Bayazid Bostami Road,  
Chittagong-4210, Bangladesh.



NIRAPON

